

Because life is

PettyTM
Real

8 Hordley Street
Burnley
BB12 6JE



For Sale

Asking Price £130,000

- *For Sale With No Onward Chain Delay!*
- Perfect For First Time Buyers!
- Two Bedroom Mid Terrace Property.
- Two Reception Rooms.
- Stunning Kitchen.

- Four Piece Bathroom Suite.
- Attic Space.
- Great Transport Links.
- Situated In The Heart Of Lowerhouse.
- Leasehold | Council Tax Band: A | EPC Rating: TBC



Petty Real are delighted to present for sale this charming two-bedroom mid-terrace on Hordley Street, Burnley – offered to the market with no onward chain delay, making it an ideal purchase for first-time buyers.

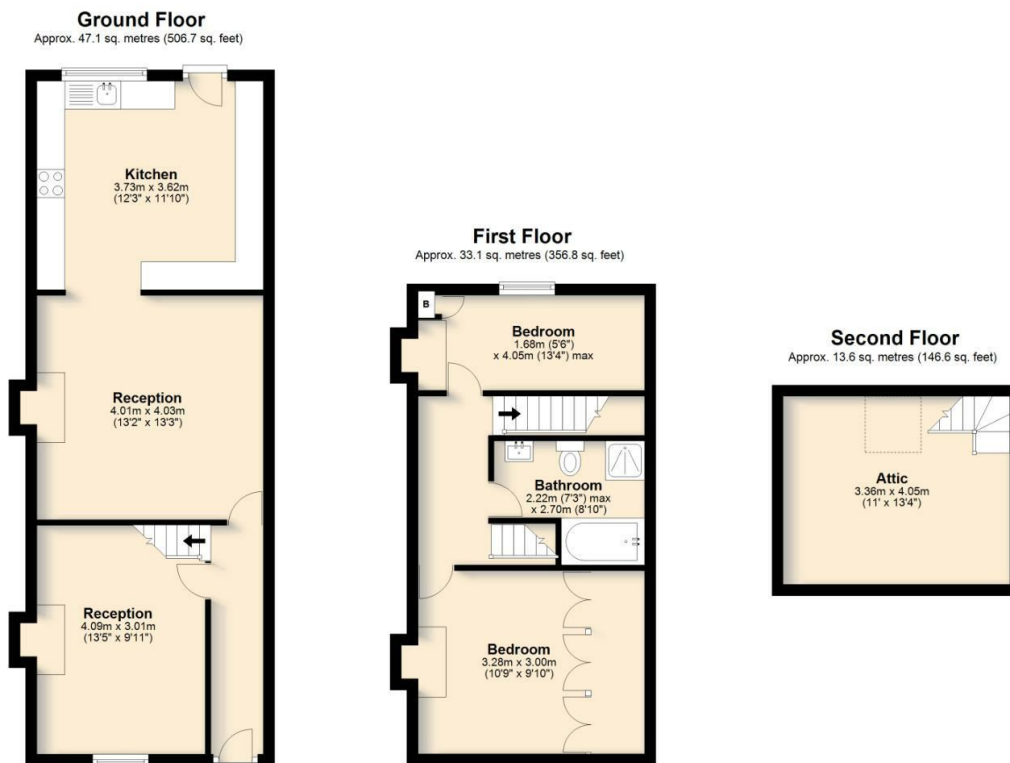
Upon entering through the front door, you are welcomed into the first reception room, currently used as a comfortable living space. This room offers ample space for sofas, coffee tables, and media units, while boasting a characterful exposed beam and a pleasant outlook across the park.

The second reception room, located beyond, is presently utilised as a dining room but offers versatile use as either a dining or primary living space. Generous in size, it accommodates a large dining table with ease and flows seamlessly into the modernised kitchen. Thoughtfully designed, the kitchen provides excellent counter space to three sides, with the sink positioned beneath the window, the hob to the left wall, and an integrated oven and grill within fitted cabinetry.

To the first floor, the front-facing master bedroom benefits from fitted storage along one wall, reducing the need for additional freestanding furniture. Across the landing lies the spacious four-piece family bathroom, comprising a walk-in shower, bath, WC, and wash basin. To the rear sits the second bedroom, perfect as a child's bedroom, guest room, or home office, complete with further integrated storage beside the chimney breast.

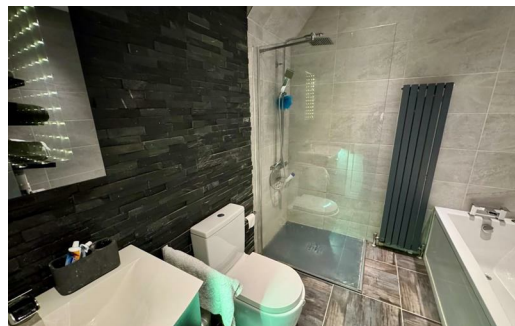
The property also boasts a large attic space with eaves storage, providing excellent potential for additional use.

Positioned in a sought-after location with views over the park and close to local amenities, this property presents an excellent opportunity for buyers seeking a ready-to-move-into home with no chain delay.



All floorplans provided are for guidance only. Please check all dimensions before making any decisions reliant upon them. Plan produced using PlanUp.

Hordley Street, Burnley



These particulars, whilst believed to be accurate are set out as a general outline only for guidance and do not constitute any part of an offer or contract. Intending purchasers should not rely on them as statements of representation of fact, but must satisfy themselves by inspection or otherwise as to their accuracy. No person in this firm's employment has the authority to make or give any representation or warranty in respect of the property.

4 Manchester Road, Burnley, Lancashire, BB11 1HH
T.

burnley.sales@pettyreal.co.uk burnley.lettings@pettyreal.co.uk
property.management@pettyreal.co.uk

www.pettyreal.co.uk